

Extra presents for you!



Longer 12-carriage trains
South Bank entrance and renewed
Tube for Blackfriars to follow
New ticket hall for Farringdon
New station building at
West Hampstead Thameslink

Great news!

After three years' work extending platforms and upgrading power supplies and signalling systems ready for longer trains, we're nearing the end of the first phase of the Thameslink Programme.

And in central London, Network Rail's engineers are still in but this December you'll see some great improvements.

Longer trains, more space*

From 12 December First Capital Connect will be running longer 12-carriage trains on its Bedford and Brighton services (fast between St Albans and London) with 50% more space.



Ready for the off! Four longer trains in the morning and four in the evening.

There'll be four 12-carriage trains in each morning and evening peak every weekday targeted on the busiest services:

- Bedford to Brighton: 06.58, 07.30, 07.48 and 17.06 (arrives London Bridge 18.27)
- Brighton to Bedford: 08.02, 16.04 (arrives St Pancras 17.32), 16.30 (arrives St Pancras 18.02) and 17.02 (arrives St Pancras 18.32)

That's almost 2,000 extra seats at the busiest times of the day and First Capital Connect's also doubling the length of four peak four-carriage trains as well, creating a further 1,200 additional seats.

***Please note:** the longer trains do not stop at stations between St Albans and London and do not travel around the Wimbledon loop, however they will create extra space on services that do call at these stations. find out more at thameslinkprogramme.co.uk

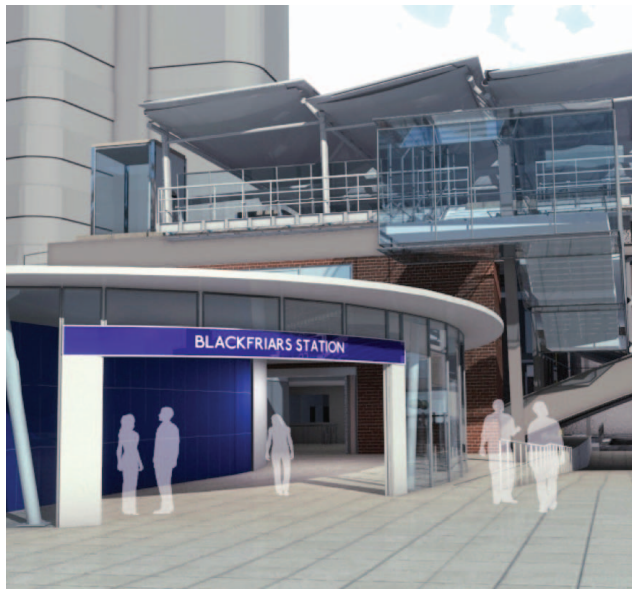
You may also wonder why there aren't more 12-carriage services. That's because there simply aren't enough carriages available but a new fleet is being built, which will arrive in 2015, providing many more 12-carriage trains.



A better Blackfriars

Building work goes on at Blackfriars station but we've some big improvements this December. Find out the latest timings at thameslinkprogramme.co.uk

5 December: South Bank entrance



If you work south of the river or want to visit The Globe or Tate Modern, the new South Bank station entrance (above) will really speed your journey. It will have a staffed ticket office and ticket machines.

A word of advice, though: only one lift will be available when the new entrance opens, to platform 1; the second will follow later in the development.

Ticket holders will be able to use the station bridge to cross the river but if you are using a Pay As You Go Oyster card you will be charged a penalty unless you catch a train with either National Rail or London Underground.



12 December: New north bank station entrance for National Rail and (later) the Tube

Blackfriars' new glazed north station entrance (above) also opens, from 12 December 2011, between 6am and 8pm Mondays-Fridays.

Inside the new north bank entrance, hoardings will screen off the Tube station. Work will be going on behind hoardings but passengers will use this route to reach National Rail platforms 1 and 2.

Please have your tickets ready to operate new ticket gates.

Travelling north or west from Blackfriars station on the north bank

Use the new north bank entrance between 6am and 8pm if travelling west (towards Temple Tube station) or north along New Bridge Street.

Travelling east from Blackfriars station on the north bank

Use the existing Queen Victoria Street exit on the north side of the station if heading east, towards Mansion House Tube station or the Mermaid link. This is also your route out of the station when the new north bank entrance is closed.

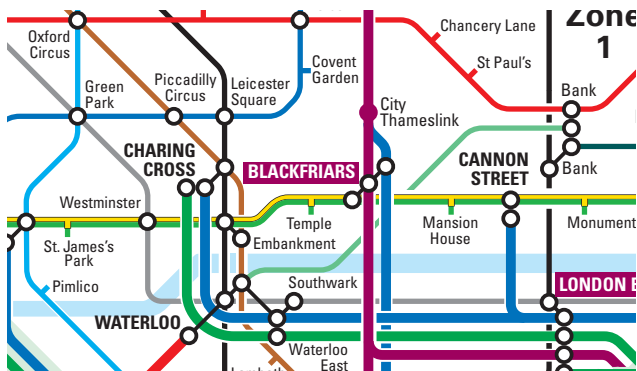
Travelling south from Blackfriars station

Use the new south entrance which opens on 5 December 2011.

Tube back soon

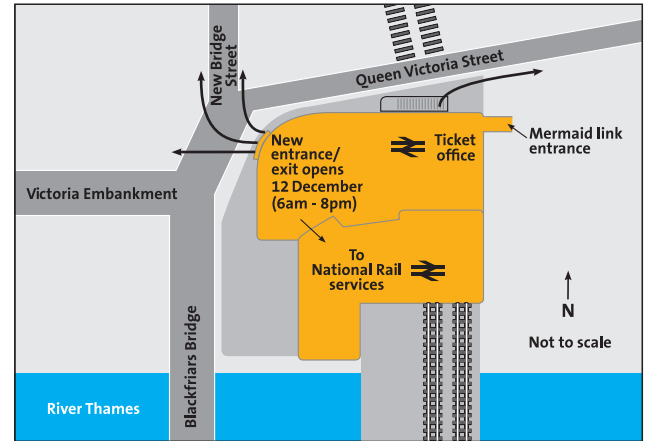


Soon after the other December improvements, the Tube returns to Blackfriars, restoring the link with the District and Circle lines that closed in March 2009. The new Tube station will have step-free access throughout, a larger ticket hall, with new and improved access through lifts and escalators to widened platforms. An opening date will follow.

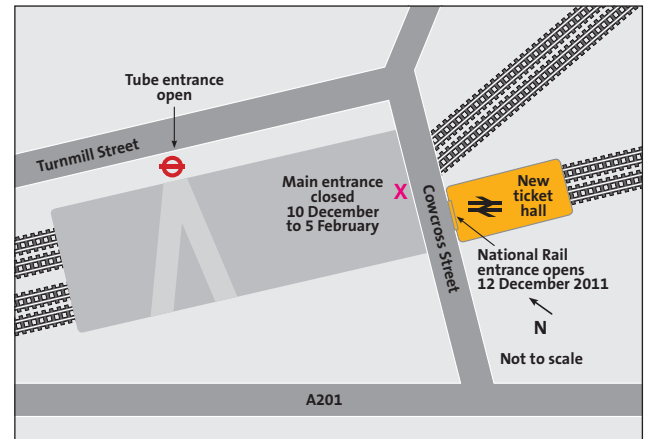


How to find the station

Blackfriars station



Farringdon station



Changing Farringdon

Farringdon station will still be a work in progress but the new National Rail ticket hall comes into use opposite the existing entrance on 12 December.

Work in the ticket hall on the lifts and ticket office will be finished in 2012 along with the rest of the station.

Stairs will lead down to the newly-extended Thameslink route platforms where the first 12-carriage services will call.

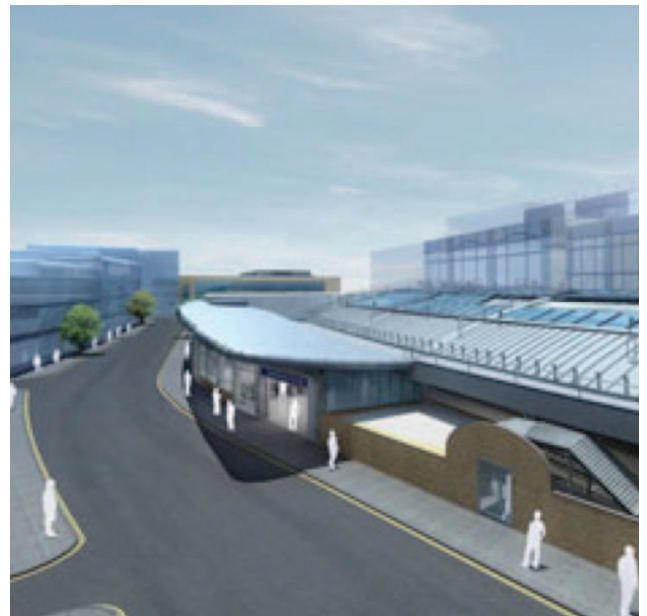
At the same time, the main entrance to the London Underground station will close from Saturday 10 December 2011 - Sunday 5 February 2012, to make space for the remodelling of the Tube ticket office and ticket gates.

Passengers will be redirected to the Turnmill Street side entrance where a new circulation area will give extra direct access to Tube services on platform 1 as well as the new footbridge that has stairs to platform 2 and the Thameslink route platforms 3 and 4.

With the original Tube ticket office temporarily closed, the only other access on and off the Thameslink route platforms will be at the opposite end of the station (south), through the new National Rail ticket hall.



The new ticket hall will open on 12 December at Farringdon station



The new Tube station entrance in Turnmill Street

West Hampstead Thameslink station

A brand new station building opens on 12 December at West Hampstead Thameslink. It links to a new footbridge with lifts to all platforms and, by mid January, there will be two entrances instead of one to ease congestion at this busy interchange with London Overground and London Underground.

For more information visit
thameslinkprogramme.co.uk

or call
0845 026 4700

The big picture

The Thameslink Programme is a £6bn Government-funded project to increase capacity on one of the country's most crowded commuter lines, the Bedford to Brighton Thameslink route. The first phase allows 50% longer, 12-carriage trains to run for the first time on Bedford to Brighton services with additional stunning station redevelopments at Blackfriars and Farringdon.

The next phase, to be completed in 2018, will provide a new fleet of approximately 1,200 eight-carriage and 12-carriage trains and connect services from Peterborough and Cambridge with the cross-London Thameslink route as well as other new destinations south of the capital. London Bridge station will be rebuilt and there will be a metro-like frequency of trains across the heart of London – up to 24 times an hour in each direction.



CI CODE: LEAFTLP:12CARRIAGE.1111

C/COM1059/1011/12CARRIAGE