

Thameslink Programme Rolling Stock Project

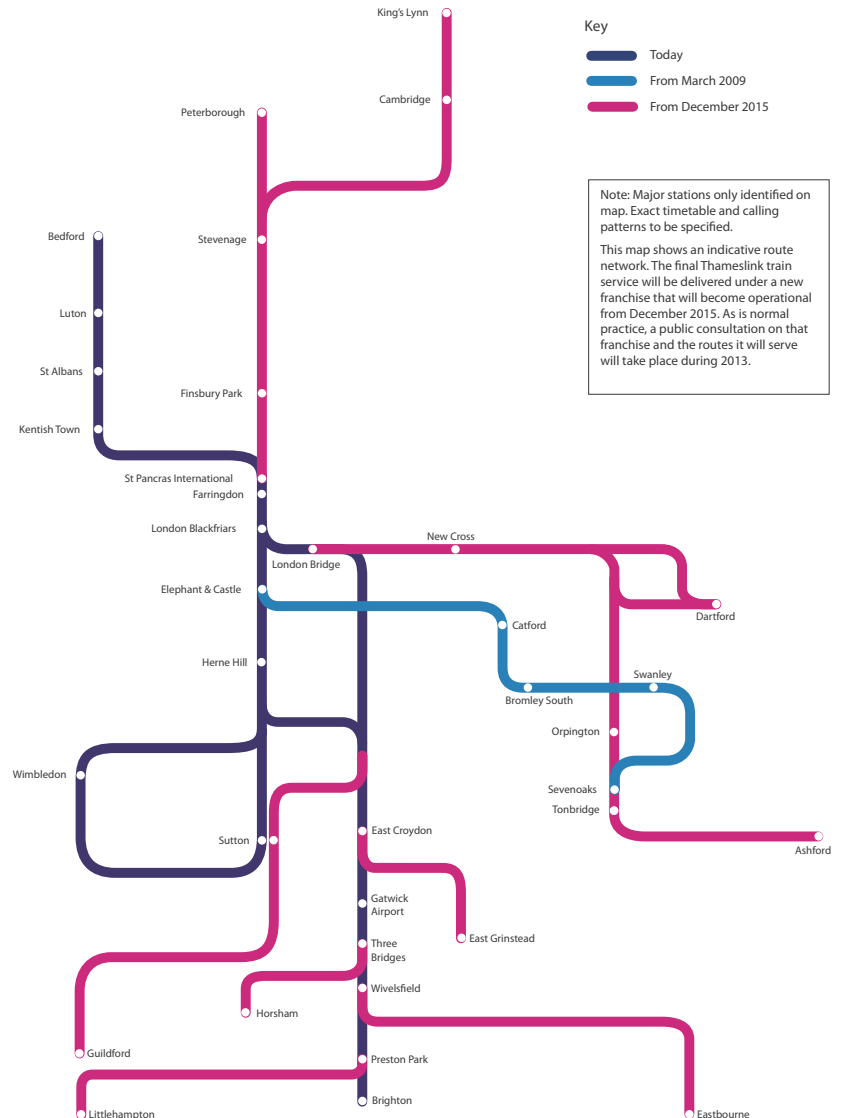
The big picture >

In order to improve train services to and through London, we are investing £5.5bn in new and longer trains (new rolling stock), new track and new stations.

This scheme, known as the Thameslink Programme, will create new direct routes across London to destinations on the Great Northern Route.

These new longer trains require modern maintenance facilities and railway sidings that are long enough to accommodate them.

Following a careful site selection process, carried out by ARUP, two new depots are planned. One is to the south of Three Bridges and the other near Hornsey.



Thameslink Programme Rolling Stock Project

Who's Involved? >

The project is strategically very important and supported by a number of different organisations: >

Network Rail is responsible for improvements to track and stations as part of the Thameslink Programme and owns the land on which the new depots would be built.

The **Department for Transport** (DfT) is responsible for the rolling stock project and funding the new depots. It is also responsible for choosing the provider of the new rolling stock (trains). This provider would ultimately build the depots.

First Capital Connect is one of three current train operators on the Thameslink route who are key partners in delivering the Thameslink Programme. The train operators will run the new trains, which will use the depots.

ARUP has been employed by the DfT to carry out the initial design and options report for the depots.



Thameslink Programme Rolling Stock Project

The Site Selection Process >



An extensive site selection process has identified two sites for the depots in London and the South East. >

One is at a site near Hornsey. The other is south of Three Bridges.

Criteria for site selection >

- Location in relation to Thameslink route and rail connections
- Ability to handle long trains
- Availability
- Local and environmental impact
- Value for money
- Impact on local area

Why Three Bridges? >

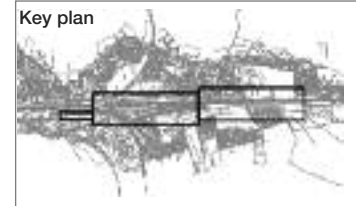
- The site is large enough to accommodate all of the required facilities
- The site is on railway land and parts are already in use
- Good connections to the Thameslink route
- Good road access for employees

Thameslink Programme Rolling Stock Project

How would it be built? >



Site plan



The work also requires >

- A new employee footbridge over the main line
- A wider railway embankment to the south of the site
- Access from Williams Way (for access to the west of the site) and Billinton Drive (for access to the east of the site).

All of the facilities would be constructed on railway land south of Three Bridges station (on the London to Brighton line). >

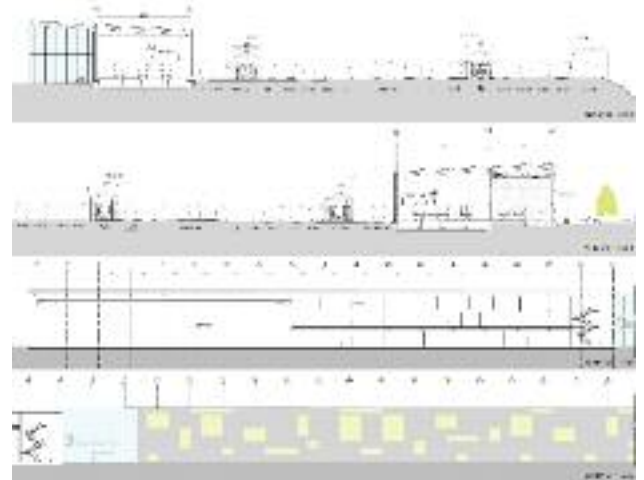
- The scheme will mean 300+ new jobs and a boost to local shops and other amenities.
- On-site parking will be provided for approximately 90 vehicles and facilities for cyclists will also be provided.

The new maintenance depot will be located on the western side of the site, along with important equipment including a train washer, sidings, and an electricity substation. >

- Additional sidings, an underframe cleaning facility (UFC) and a second train washer will be located on the eastern side of the site.

Thameslink Programme Rolling Stock Project

Design >



Cross-section of proposed maintenance depot building

The design and layout of the maintenance facilities have been carefully considered. >

- The site has been designed to maximise the available operational space while being aware of neighbours and taking into account sustainability measures.

Key considerations in the design include: >

- proximity to and impact on neighbours to the railway
- potential visual impact
- operational requirements
- potential noise
- use of lighting
- use of sustainable materials

Construction of the depot and the associated facilities would take 18 months. >

- The construction period offers the potential for increased local employment. Further details of such opportunities will emerge during the construction phase

Thameslink Programme Rolling Stock Project

What Happens Next? >



Visualisations of how the new Thameslink trains might look.

Plans to build the two depots are still at an early stage but they are needed by 2012 to help keep the new trains running. >

Before we progress these plans, we would very much like to hear your views on what you have seen today. >

If you require further information please speak with one of the representatives present and fill out a feedback card so that we have a record of your views.

If you would prefer to speak to Network Rail at a later time, please call our 24 hour helpdesk on **08457 11 41 41**

If you would like to find out more about the Thameslink Programme please visit: >

www.networkrail.co.uk/thameslink

If you would like to find out more about the plans for new trains on the Thameslink route please visit:

www.thameslinkprogramme.co.uk